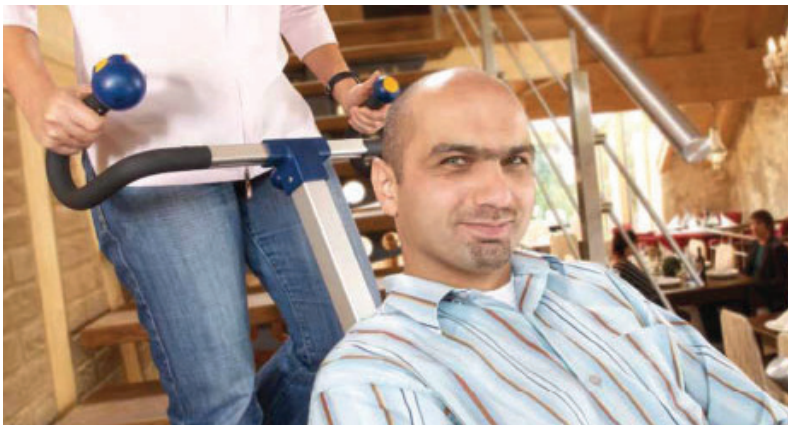


# S-MAX

## Powered Mobility Stairclimber for tight or spiral stairs

Suitable for virtually all commercially available wheelchairs. The S-Max stairclimber can be mounted or removed quickly and easily from your wheelchair for transportation.



### FEATURES

- 1 ASCENDS AND DESCENDS**  
Up and down stairs in your own wheelchair quickly, safely and easily
- 2 VERSATILE WHEELCHAIR COMPATABILITY**  
Fits virtually all commercial wheelchairs, even particular narrow children's wheelchairs
- 3 SIMPLE ASSEMBLY**  
For ease of deployment and compact storage
- 4 OPERATOR CONFIDENCE**  
Handle's solid connection to the climbing unit provides a secure feeling for stairclimbing
- 5 ERGONOMIC CONSTRUCTION**  
The grips and control unit are constructed according to the newest ergonomic insights
- 6 AUTOMATIC BRAKING**  
The S-Max's safety concept includes independent brakes, which stop automatically at the edge of each step
- 7 EXTENDED BATTERY ENERGY**  
Durable and maintenance-free batteries provide energy for up to 300 steps

### BENEFITS

- Easy to handle because of the newly developed climbing system
- The climbing speed can be specifically adjusted to the particular climbing situation
- Single step mode offers optimum ease in controlling the S-Max
- Narrow stair cases or winding stairs are no problem
- Suitable for all floor coverings
- The electrical wires run inside protecting them from damage

### DIMENSIONS

MAXIMUM LIFTING CAPACITY	135kg
POSSIBLE WHEEL SIZES	12", 16", 20", 24"
WEIGHT	8.4kg
TOTAL WEIGHT	18.8kg
SEAT WIDTH	38cms – 48cms

71-75 Shelton Street, London, WC2H 9JQ,  
United Kingdom  
Tel: +44 (0)203 961 0054  
Email: [info@safety-chair.com](mailto:info@safety-chair.com)  
Web: [www.safety-chair.com](http://www.safety-chair.com)

**SAFETY CHAIR**  
Experts in safe evacuation